

JPfm : SplitFS

Contents

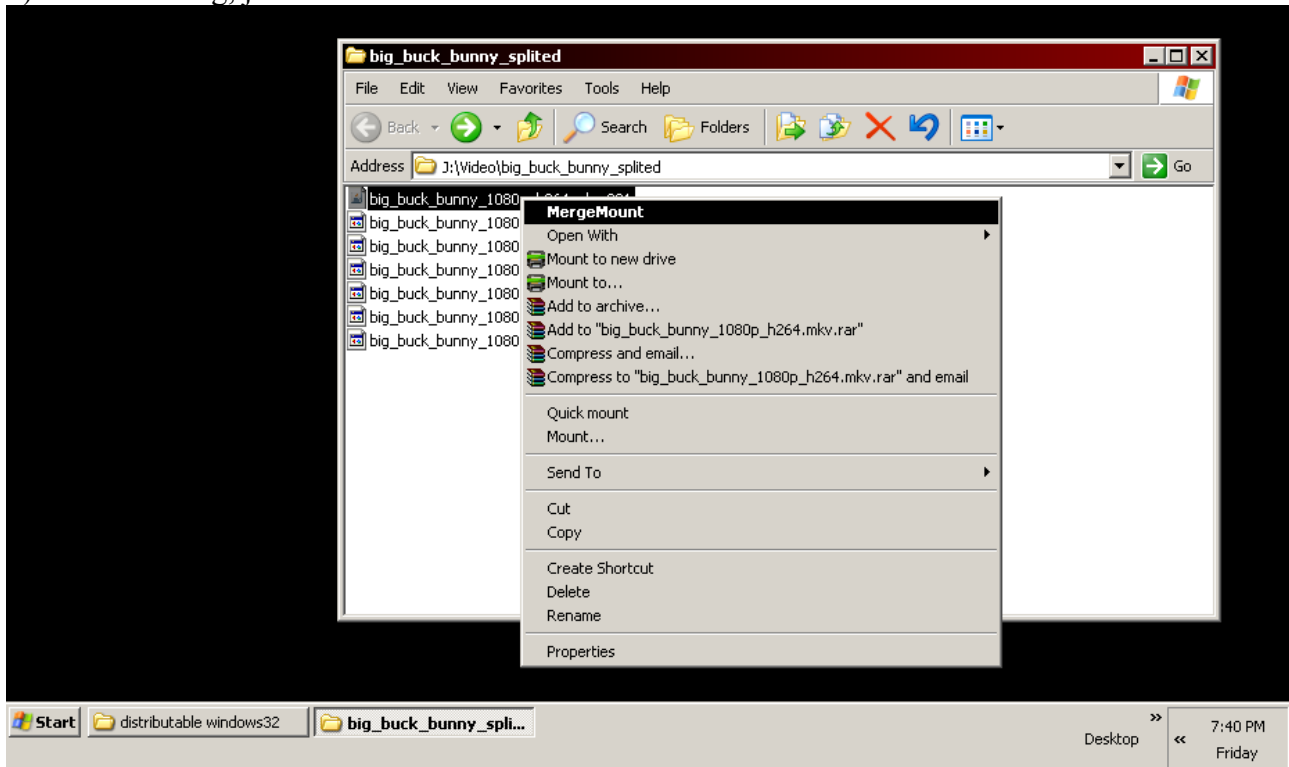
1. Installation
2. Using SplitFS
3. Installation details

1. Installation

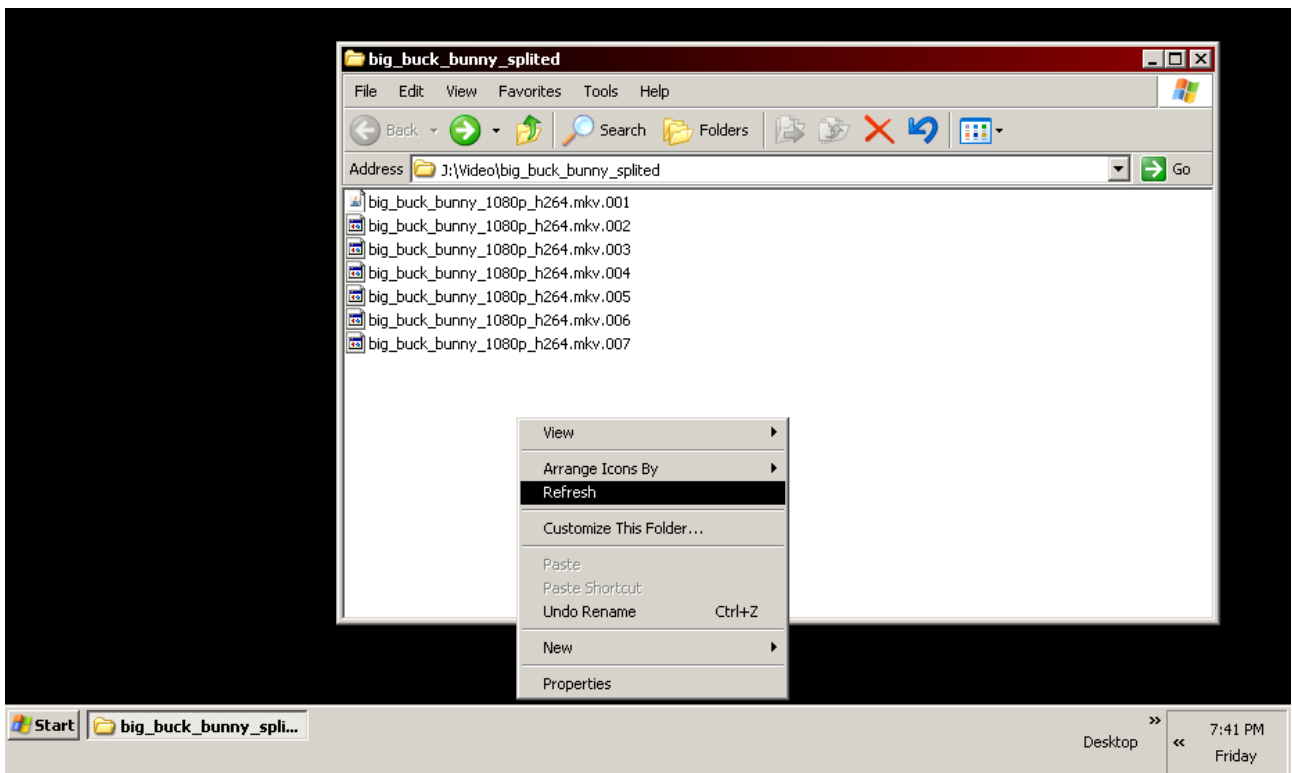
Installation is easy, you just need to run install.bat.

2. Using SplitFS

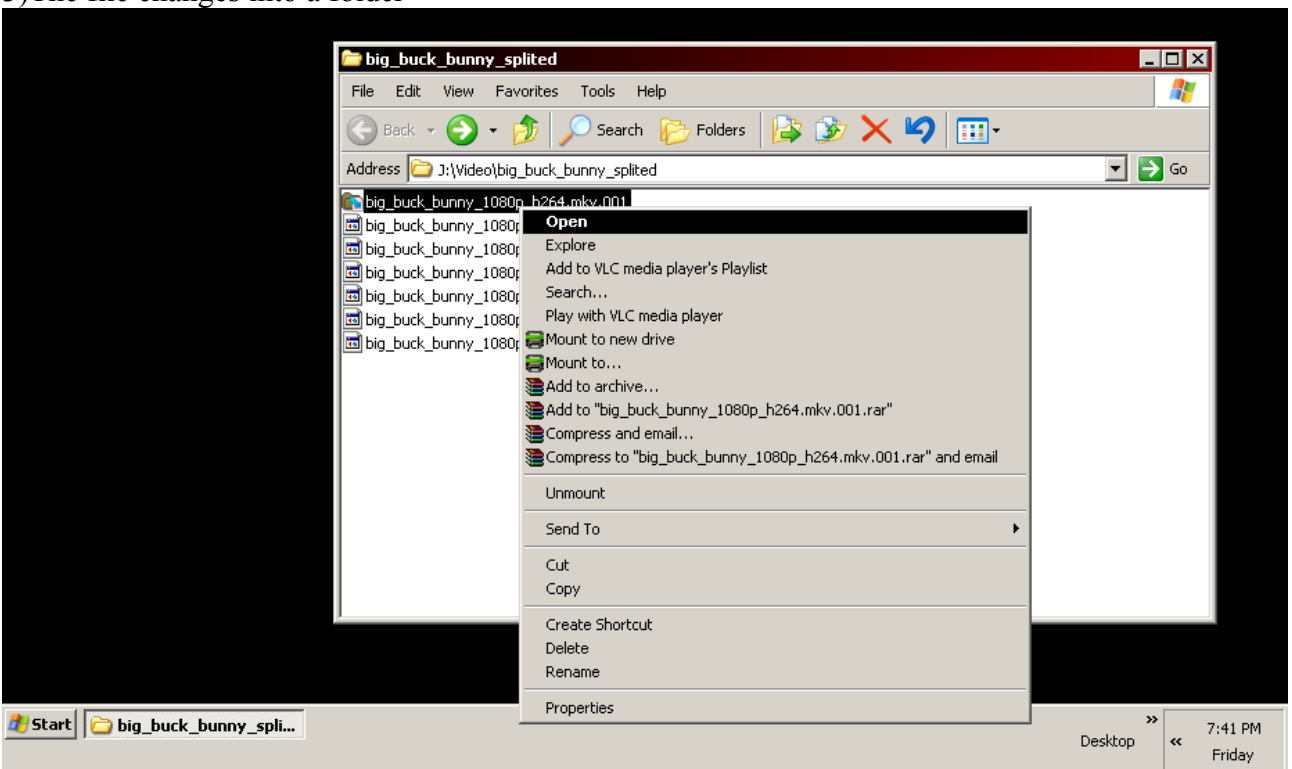
- 1)After installing, just double click a file with extension 001.



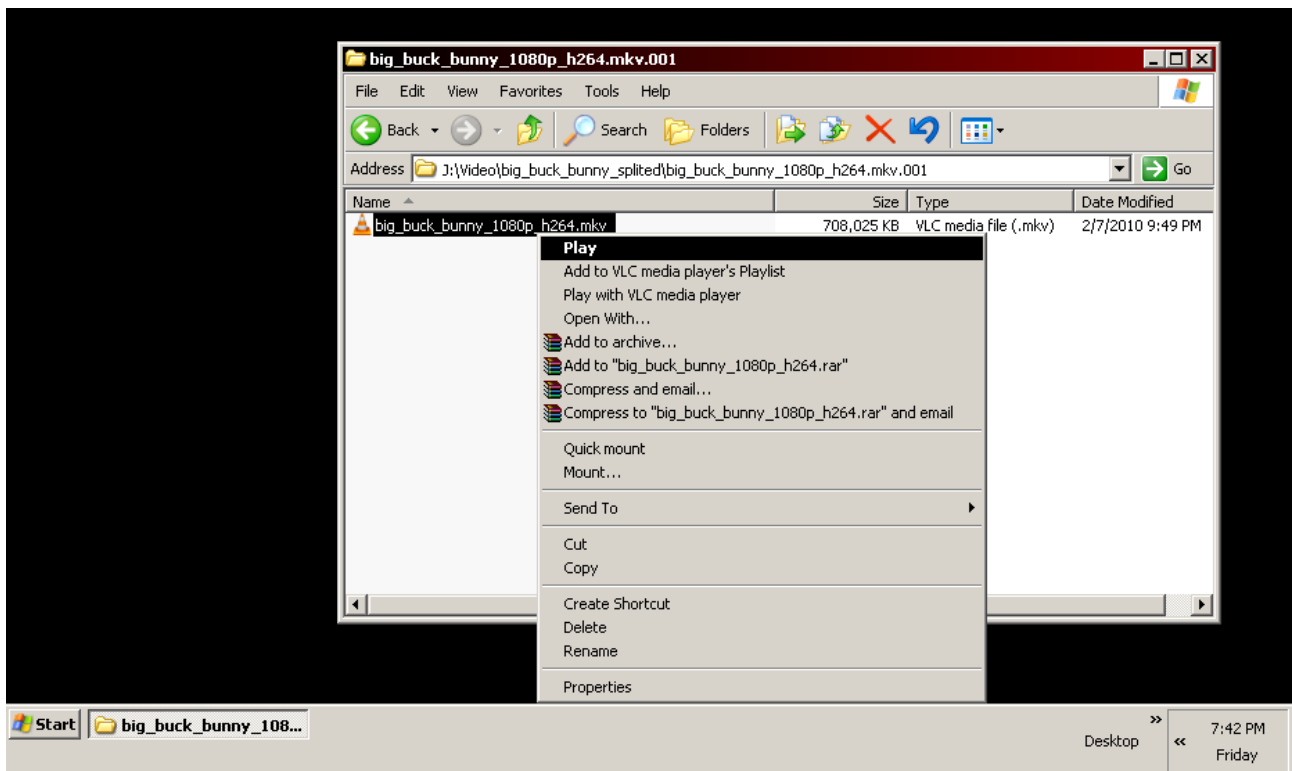
- 2)Refresh.



3)The file changes into a folder



4)Open the file inside it.



5) When finished, right click on the folder, and press unmount for changing it back to a file.

3. Installation details

If you move the jpfm program files (jpfm.jar, jpfm.dll, install.bat) to some other folder, you'll have to re-run install.bat

If you want to move the files, do it before running the installer.

The following commands are executed during installation.

```
REG ADD HKCR\001 /ve /t REG_SZ /d "splitfilestart"
REG ADD HKCR\splitfilestart
REG ADD HKCR\splitfilestart\shell
REG ADD HKCR\splitfilestart\shell\MergeMount
REG ADD HKCR\splitfilestart\shell\MergeMount\command /ve /t REG_SZ /d %spfscmand%
```

where spfscmand="javaw.exe -cp \"%SUBDIR%\jpfm.jar\" jpfm.splitfs.SplitFS \"%1\" \"%1\" \"%SUBDIR%\jpfm.dll\""

These might change some of your custom settings. Modify these commands in install.bat in required.