

# Lightbox2 and Flux2

## The bit you need to know to get it to work.

Caveat, I am no expert but thought those having problems needed a little help

### Install the Packages

To do this select the packages icon in the Site Manager or use the Packages menu above the edit window.

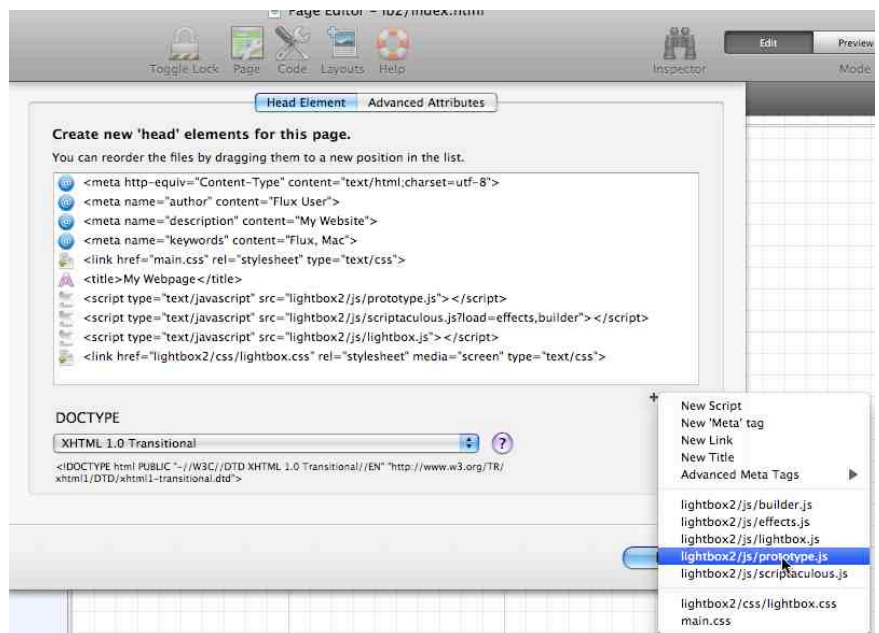


You now need to add three lines of script to the head of your document these are

```
<script type="text/javascript" src="lightbox2/js/prototype.js"></script>
<script type="text/javascript" src="lightbox2/js/scriptaculous.js?load=effects,builder"></script>
<script type="text/javascript" src="lightbox2/js/lightbox.js"></script>
```

in this order.

You can do this by clicking the Page icon so you can see the Head Element. The drop down menu has the scripts built in.



But there is a problem, Flux enters this

```
<script type="text/javascript" src="lightbox2/js/scriptaculous.js"></script>
```

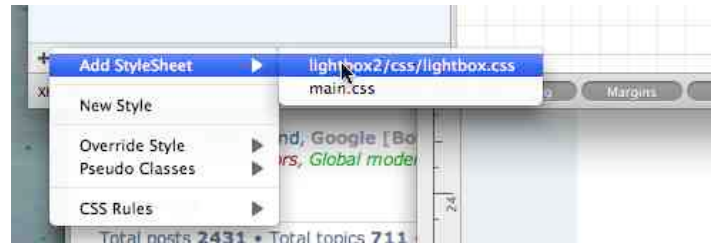
and I think you want this

```
<script type="text/javascript" src="lightbox2/js/scriptaculous.js?load=effects,builder"></script>
```

Edit the Flux entered version to be the same as this.

Next you need to add the lightbox2 css to your Styles window

Click the + at the bottom of the Styles window and add the lightbox2/css/lightbox.css file



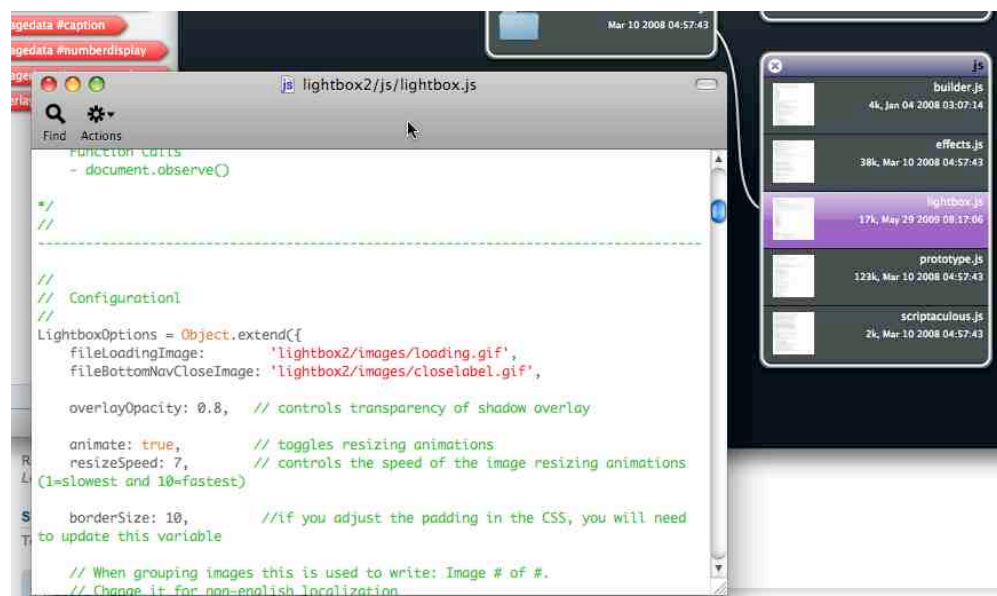
This should add this automatically to the head of your page

```
<link href="lightbox2/css/lightbox.css" rel="stylesheet" media="screen" type="text/css">
```

View as before to check it is there.

Next problem to sort are two paths in the lightbox.js file

In the Site Manager navigate to lightbox2 -> js -> lightbox.js. Double click to open in editor, scroll a little way down and find fileLoadingImage and fileBottomNavCloseImage. The paths for these should read as follows not as they are.



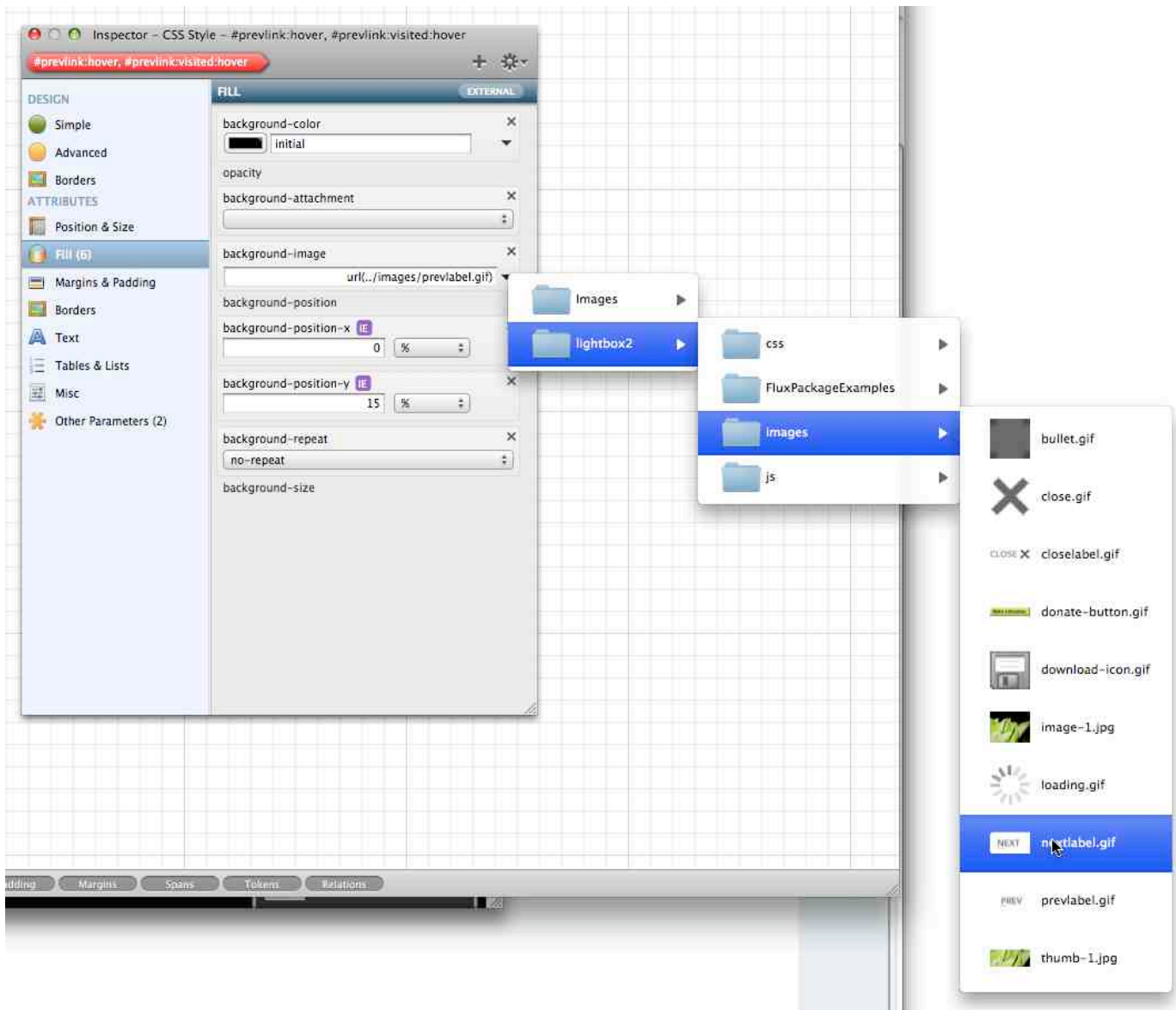
```
LightboxOptions = Object.extend({  
  fileLoadingImage: 'lightbox2/images/loading.gif',  
  fileBottomNavCloseImage: 'lightbox2/images/closelabel.gif',  
});
```

Click the red button on the Edit window and save when prompted.

Next to sort are the paths for the next and previous images. These appear when hovered over and are in the css. Look for Styles (#prevlink: hover, #prevlink: visited: hover) and (#nextlink: hover, #nextlink: visited: hover). Select each one then look in the Inspector, select Fill, then look at background-image. You will see the path is wrong, click the little triangle and navigate to the next or previous image

lightbox2 -> images -> prevlabel.giff

Just select the image and Flux will set the correct path.



You now need to add a folder of images to your site. It is important to remember to resample and resize your images so they download at a reasonable speed. Set the resolution to 72 pixels per inch and choose image dimensions that suit.

The last part is add a link to Lightbox2



Lightbox2 requires a link <a> or set of links to initiate it.

To your <a> add these Attributes

rel lightbox[your image folder]

href path to your image

title your title

See this page for more details.

<http://www.huddletogether.com/projects/lightbox2/>

Most people want a group of images to be displayed. You need to add a link to every image to get them all to show when Lightbox2 is displayed. If you want only one link to show on the page you can hide the other links by selecting Misc in the Inspector and choosing visibility hidden.