

Password Synchronization Client

Software version 2.0.0.0



General Information: info@cionsystems.com

Online Support: support@cionsystems.com

© 2017 CionSystems Inc. ALL RIGHTS RESERVED.

This guide may not be reproduced or transmitted in part or in whole by any means, electronic or mechanical, including photo copying and recording for any purpose other than the purchaser's use under the licensing agreement, without the written permission of CionSystems Inc.

The software application in this guide is provided under a software license (EULA) or non-disclosure agreement. This product may only be used in accordance with the terms of the applicable licensing agreement.

This guide contains proprietary information protected by copyright. For questions regarding the use of this material and product, contact us at:

CionSystems Inc.
6640 185th Ave NE
Redmond, WA-98052, USA
<http://www.CionSystems.com>
Ph: +1.425.605.5325

Trademarks

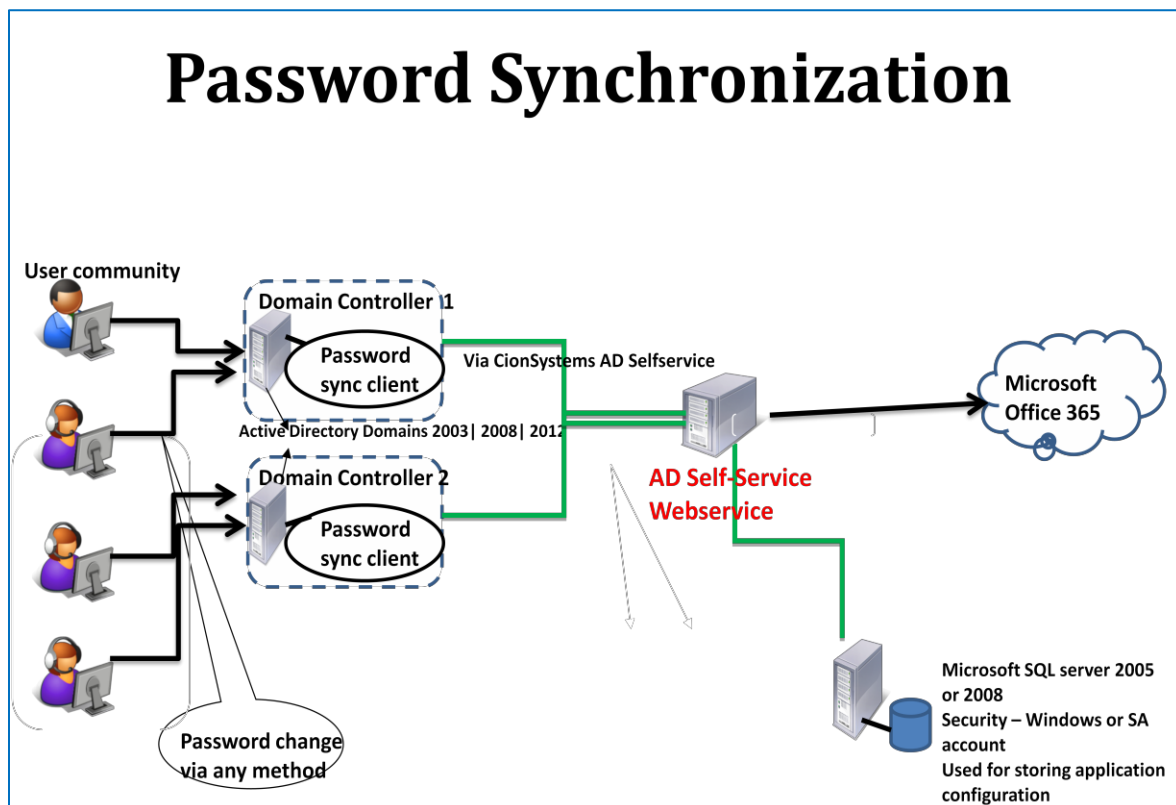
CionSystems, CionSystems Inc., the CionSystems Inc. logo, CionSystems Enterprise Self-Service and two factor authentication are trademarks of CionSystems. Other trademarks and registered trademarks used in this guide are property of their respective owners.

Table of Contents

Introduction	4
Prerequisite.....	5
System Requirements	5
Installation	5
Step - 1	5
Step - 2	9
Step -3	11

Introduction

CionSystems Password synchronization client is an extension to Enterprise Self-Service product. The client allows enterprises small and large to synchronize on premise user credentials with Office365 thereby providing Single Sign On experience for the users. Password is synchronized with Office365 regardless of how users change their on-premise AD passwords. In addition, the enterprises can utilize the benefits of self-service as well. Following picture gives an outline of the configuration and schematic of password synchronization deployment.



The following guide illustrates installation and configuration of the password synchronization client. For Enterprise Self-Service configuration, please refer to Enterprise Self-Service quick start guide.

Prerequisite

Ensure that you have installed and configured Enterprise Self-Service. Add the domain and Office365 domain to Enterprise Self-Service. For more information about Enterprise Self-Service please refer to the product quick start guide. Obtain the IP address of the system where the Enterprise Self-Service is installed. This is required for proper installation and configuration of Password sync client. The client is required to be installed on all domain controllers of the domain.

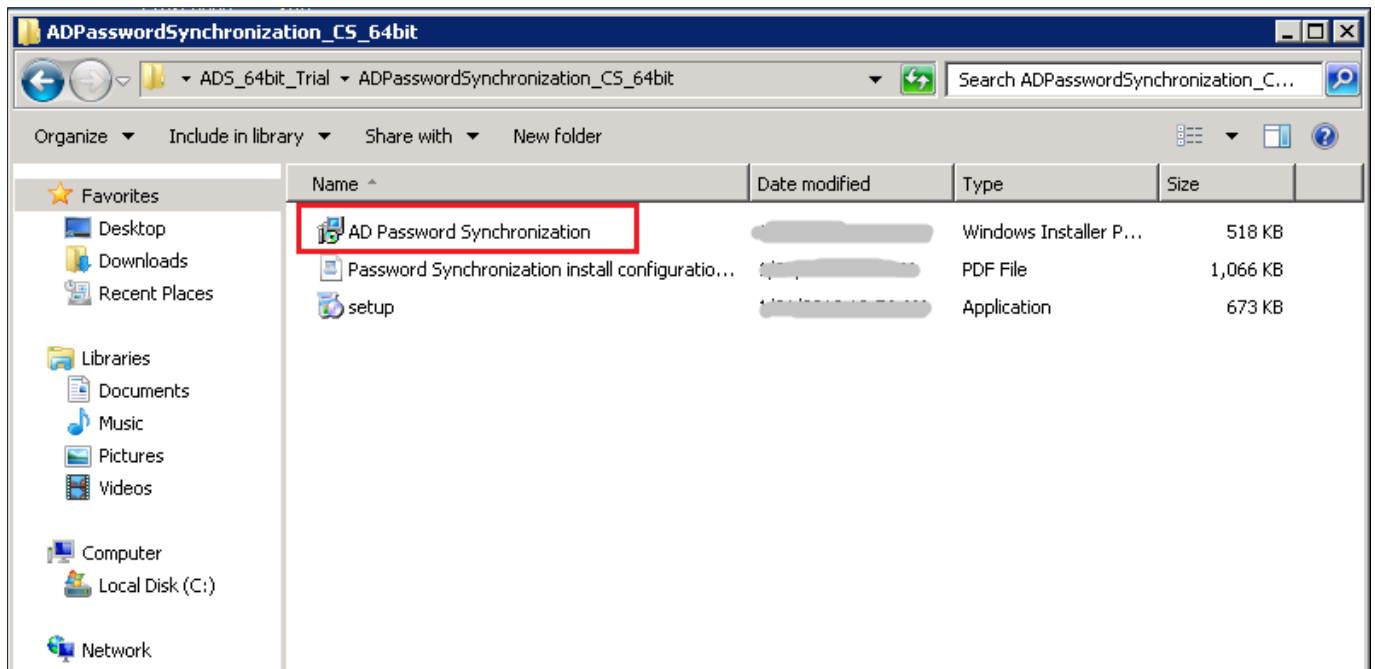
System Requirements

- 8GB RAM
- 50 MB of disk space.
- Windows Server 2003, 2008, 2012 or 2016 domain controller.

Installation

Step - 1

Open Passwordsync.zip file and extract the files to a folder on a domain controller.

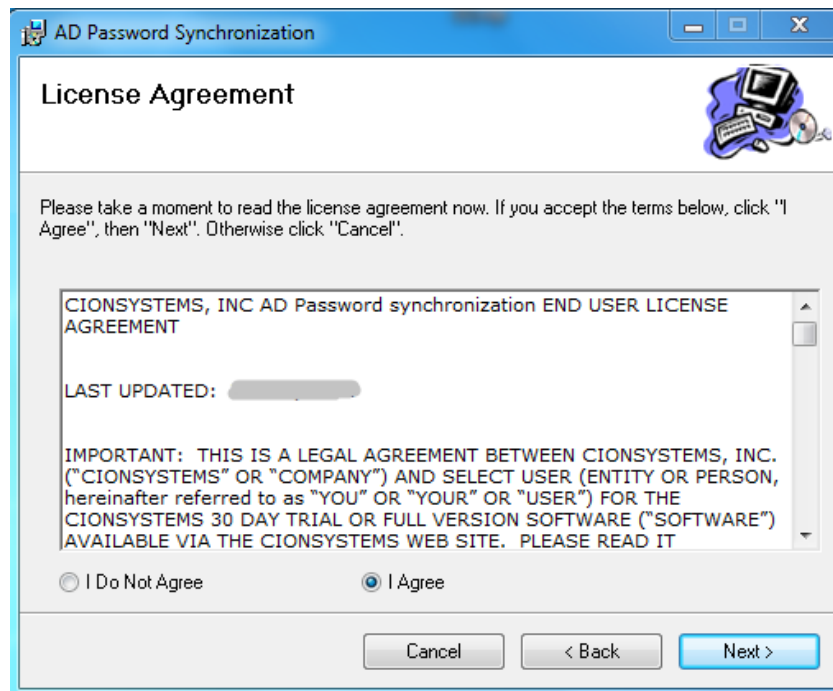


Right Click on AD Password Synchronization.msi file, Click on "Install". The welcome screen will open.

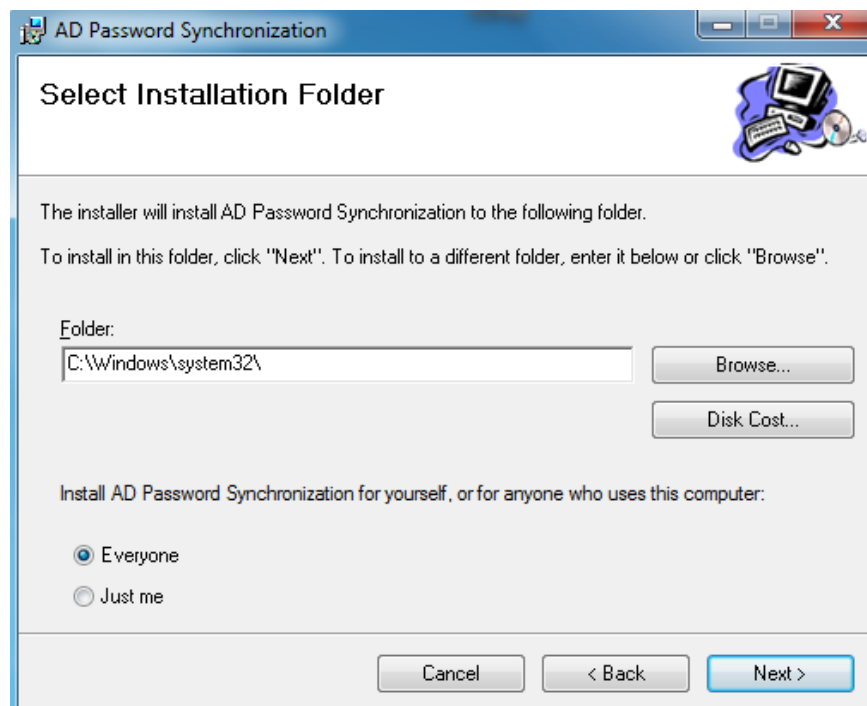
Note: On Windows server 2008 or above, you may have to hold down shift key and right click on the msi file and choose “run as administrator” to successfully install the client.



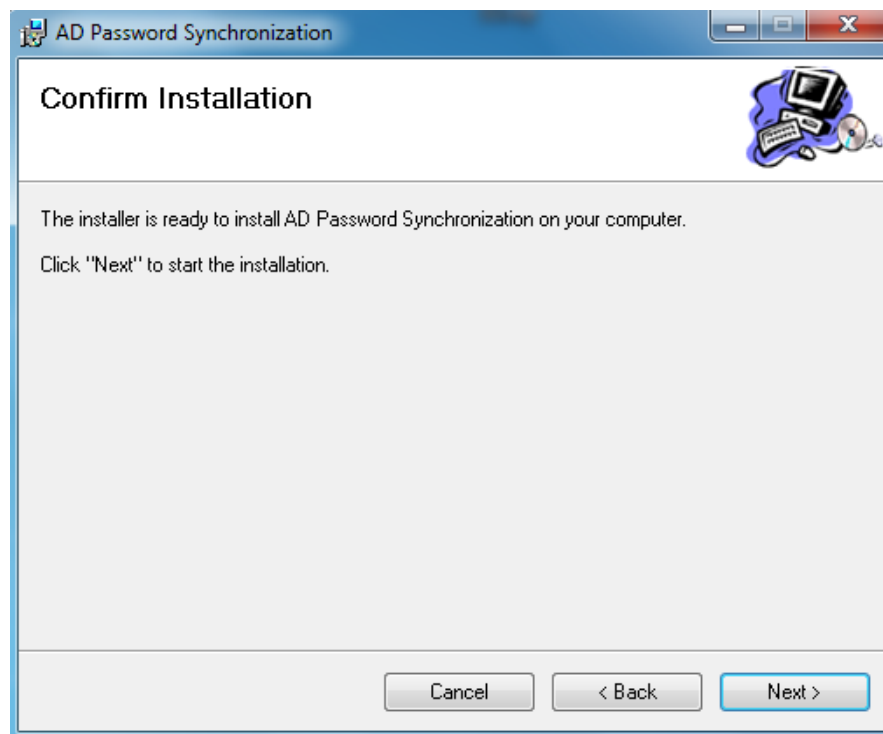
- Click on “Next”



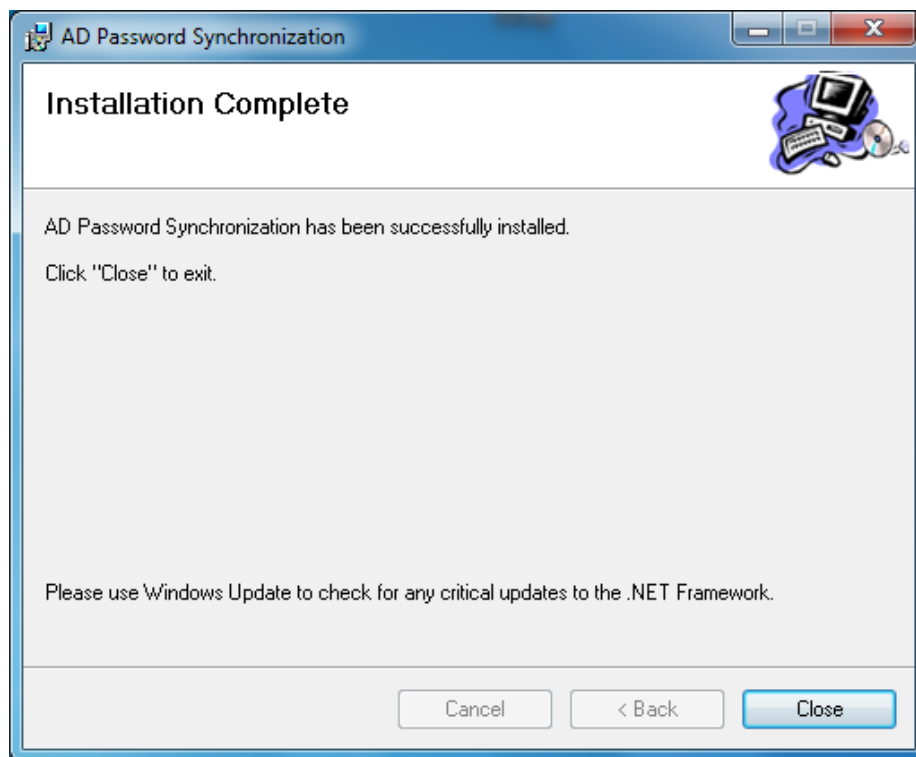
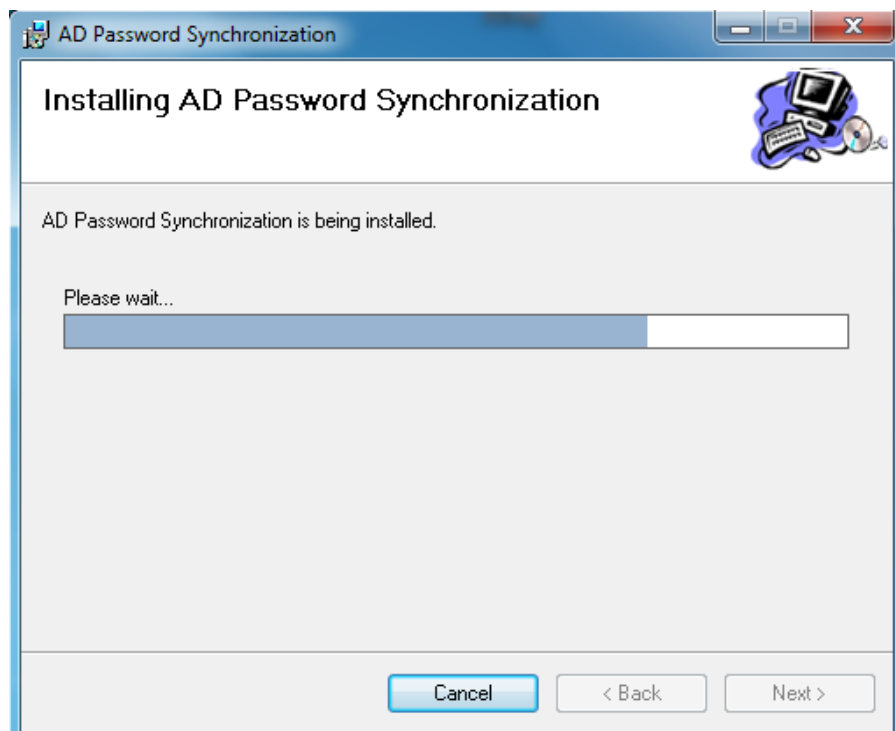
- Select “I Agree” and Click on “Next”



- Select Installation Folder and Click on “Next”



- Click on “Next”

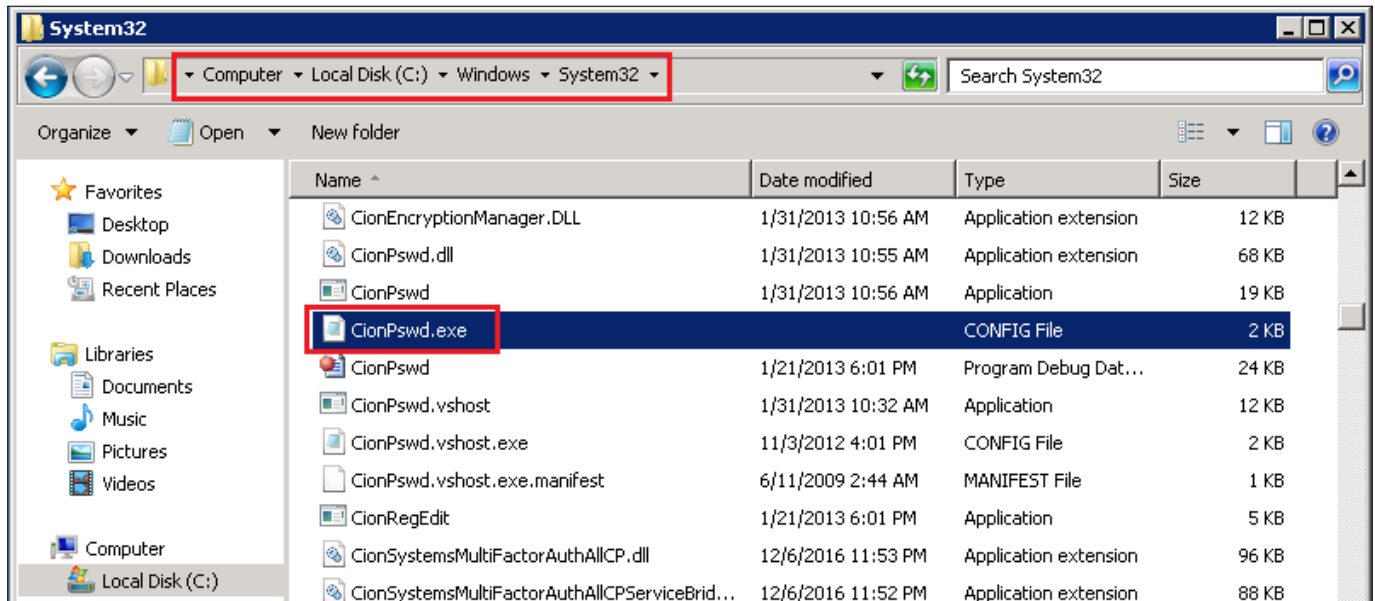


- Click on "Close". Password synchronization is installed successfully.

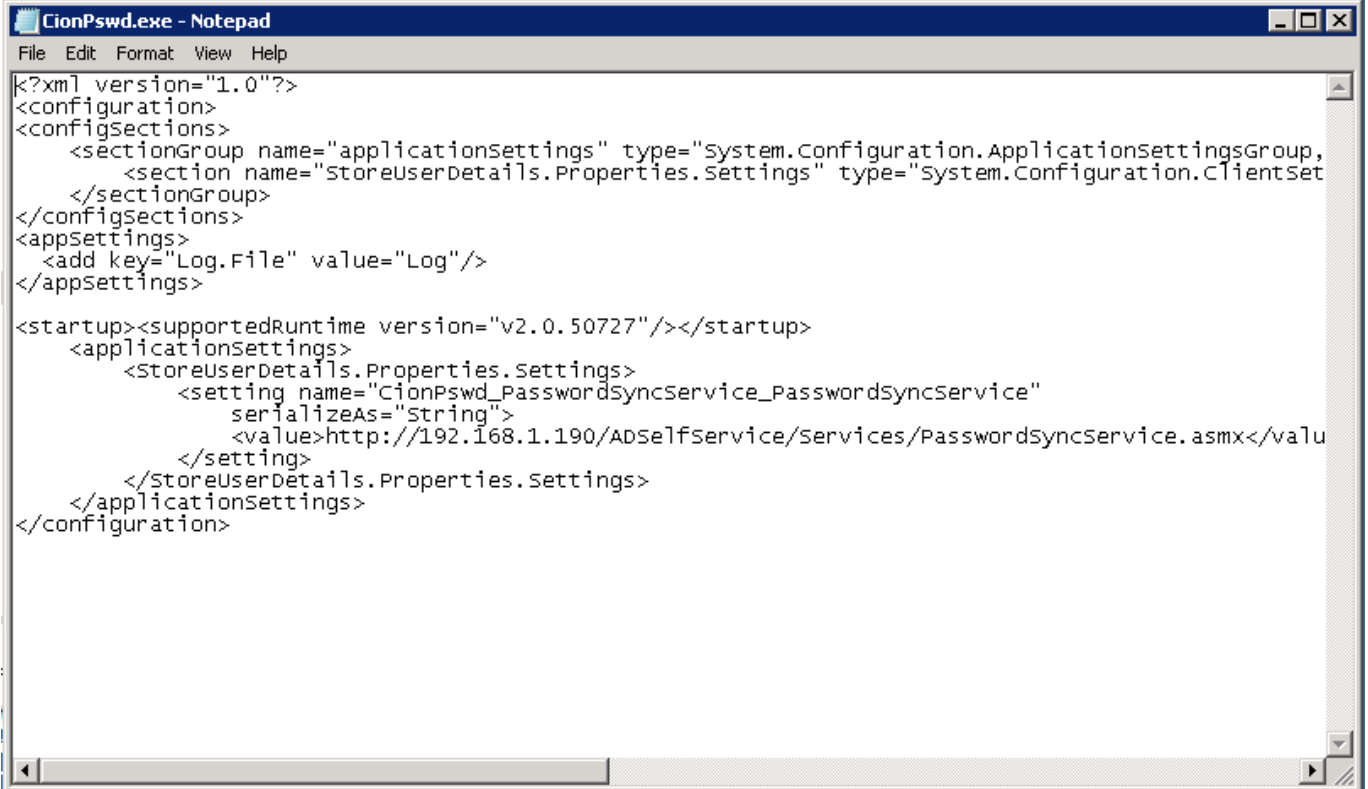
Step - 2

After installing password synchronization go to the following folder to add references to the Enterprise Self-Service. *See pre-requisite.*

C:\Windows\System32



Open the file “cionpwd.exe” by right clicking on the file, choose open with and notepad. In this file you will add the service reference of Enterprise Self-Service. You will need to modify the IP address in the URL to the IP address of the system where Enterprise Self-Service is installed.



```
<?xml version="1.0"?>
<configuration>
  <configSections>
    <sectionGroup name="applicationSettings" type="System.Configuration.ApplicationSettingsGroup,
      <section name="StoreUserDetails.Properties.Settings" type="System.Configuration.ClientSet
    </sectionGroup>
  </configSections>
  <appSettings>
    <add key="Log.File" value="Log"/>
  </appSettings>

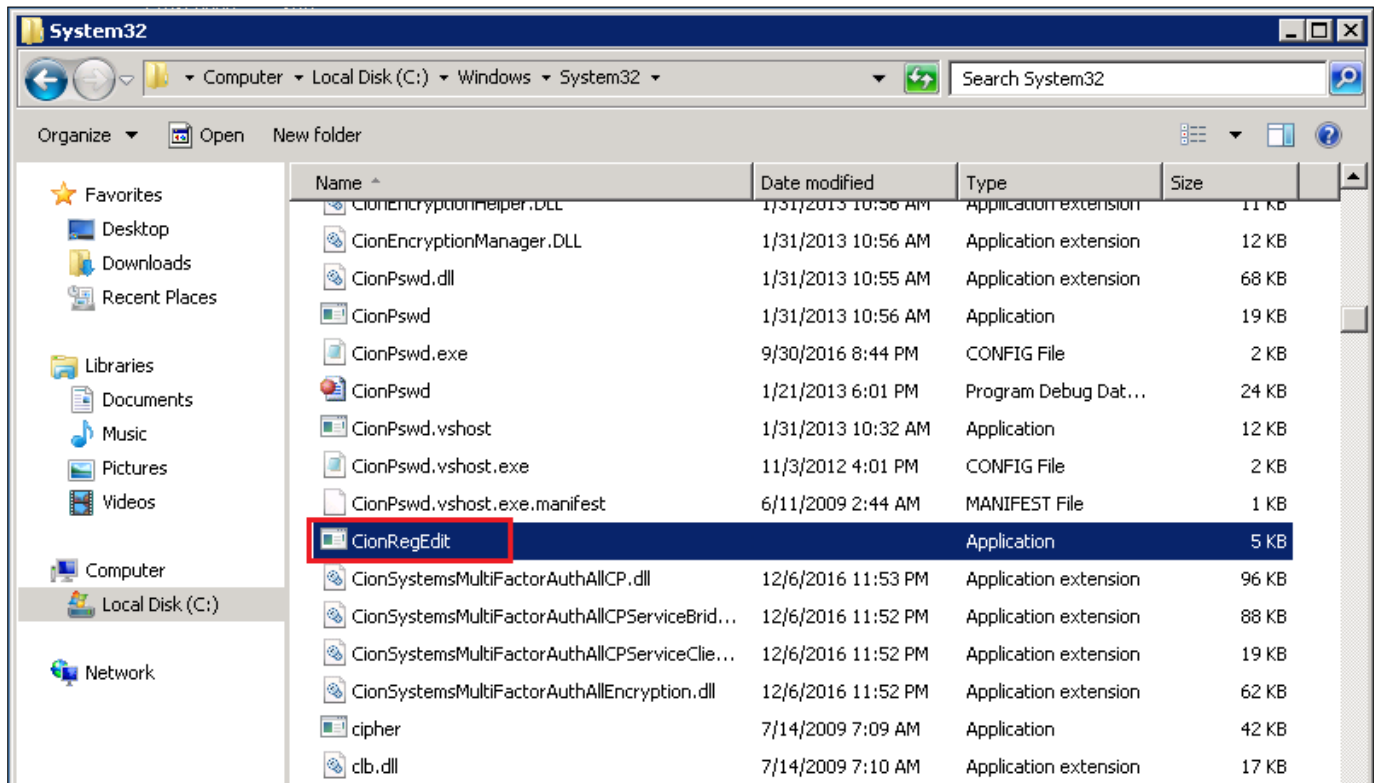
  <startup><supportedRuntime version="v2.0.50727"/></startup>
  <applicationSettings>
    <StoreUserDetails.Properties.Settings>
      <setting name="CionPswd_PasswordSyncService_PasswordSyncService"
        serializeAs="String">
          <value>http://192.168.1.190/ADSelfService/Services/PasswordSyncService.asmx</valu
        </setting>
    </StoreUserDetails.Properties.Settings>
  </applicationSettings>
</configuration>
```

For example <http://192.168.1.107/ADSelfService/Services/PasswordSyncService.asmx>

Change the IP address in the above line the configuration file.

Step -3

Final step is to execute CionRegEdit.



After successful completion, please reboot the Machine. **Make sure you reboot only one domain controller at a time.** Once, it is installed on successfully on one domain controllers, repeat this process for the remaining domain controllers.

Contact Notes:

For technical support or feature requests, please contact us at Support@CionSystems.com or 425.605.5325

For sales or other business inquiries, we can be reached at Sales@CionSystems.com or 425.605.5325

If you'd like to view a complete list of our Active Directory Management solutions, please visit us online at www.CionSystems.com

Disclaimer

The information in this document is provided in connection with CionSystems products. No license, express or implied, to any intellectual property right is granted by this document or in connection with the sale of CionSystems products. EXCEPT AS SET FORTH IN CIONSYSTEMS' LICENSE AGREEMENT FOR THIS PRODUCT, CIONSYSTEMS INC. ASSUMES NO LIABILITY WHATSOEVER AND DISCLAIMS ANY EXPRESS, IMPLIED OR STATUTORY WARRANTY RELATING TO ITS PRODUCTS INCLUDING BUT NOT LIMITED TO THE IMPLIED WARRANTY OF MERCHANTABILITY, FITNESS FOR A PARTICULAR PURPOSE, OR NON-INFRINGEMENT. IN NO EVENT SHALL CIONSYSTEMS INC. BE LIABLE FOR ANY DIRECT, INDIRECT, CONSEQUENTIAL, PUNITIVE, SPECIAL OR INCIDENTAL DAMAGES (INCLUDING, WITHOUT LIMITATION, DAMAGES FOR LOSS OF PROFITS, BUSINESS INTERRUPTION OR LOSS OF INFORMATION) ARISING OUT OF THE USE OR INABILITY TO USE THIS DOCUMENT, EVEN IF CIONSYSTEMS INC. HAS BEEN ADVISED IN WRITING OF THE POSSIBILITY OF SUCH DAMAGES. CionSystems may update this document or the software application without notice.



CionSystems Inc

6640 185th Ave NE,

Redmond, WA-98052, USA

www.CionSystems.com

Ph: +1.425.605.5325

This guide is provided for informational purposes only, and the contents may not be reproduced or transmitted in any form or by any means without our written permission.