



# DotNetGallery V 1.2 User's Manual

DotNetGallery is a product of CuteSoft

<http://www.CuteSoft.net>

Last Modified: 07/07/2005

**Applies for: trial, application, server and redistribution license**

Licensing and Disclaimer .....	3
Introduction .....	3
Features .....	4
Supported Environments .....	4
Installing DotNetGallery .....	4
Install a DotNetGallery license .....	7
Implementation Errors .....	8
Obtaining Support .....	8

## Licensing and Disclaimer

Installation of this software means that you agree to be bound by the terms of the enclosed license agreement.

Make sure that you have read and understand the license before installing.

### DISCLAIMER:

DotNetGallery is only an image gallery application. It is your responsibility to ensure that you use DotNetGallery in a secure manner. CuteSoft accepts no responsibility for damages resulting from the use of DotNetGallery.

## Introduction

DotNetGallery is an ASP.NET server control designed for easy displaying image galleries in the aspx pages. It is a file-based, dynamic, image gallery. It is also a highly configurable application that automatically generates fast thumbnail indexes of a folder structure. You can easily organize your pictures in folders on a hard disk. Also, adding new pictures is as simple as creating a folder and copying (uploading) files there.

It can be integrated seamlessly with the Microsoft® IBuySpy Portal sample, DotNetNuke, or your own .NET applications. You can use DotNetGallery to quickly develop great looking slide shows and photo gallery.

It is also effortless to implement. All you need to do is put DotNetGallery.dll into your project bin folder. All the images and pop-up files will be extracted from dll automatically when the first hit comes to the page.

If you are looking for a powerful and professional web gallery solution, DotNetGallery is a perfect product for you. It contains most important features you need. We would be glad to help you to customize the Gallery to suit your specific needs. Save time and money with DotNetGallery. Why spend thousands of man-hours if we have done it for you?



j0262881



j0262882



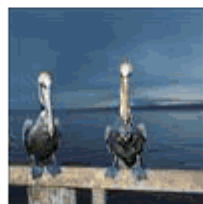
j0262914



j0262923



j0262940



j0262964



j0262972



j0262974

This user's manual provides comprehensive step-by-step information, examples and procedures to help you set up, customize DotNetGallery to your needs and implement it in your web applications.

For support, updates or error reporting please visit us online at <http://CuteSoft.net>

Email: [support@CuteSoft.net](mailto:support@CuteSoft.net)

## Features

- Completely automated dynamic gallery creation finds all of the Images in the directory and builds the gallery display according to your settings
- Albums support title, description, cover image and thumbnail view of contents
- Automatically creates thumbnails of all your images and places them in the same directory
- You decide how you want the galleries to appear, including being able to set such things as...Thumbnail width and height. Support for auto ratio
- Number of thumbnails to be displayed per row
- Number of thumbnails to be displayed per column
- Border, width, spacing, and color of the gallery tables
- Ability to resize the upload images

## Supported Environments

### Web server

You must have IIS running and Microsoft ASP.NET Version 1.0 or 1.1 installed on the server where you want to install DotNetGallery.

## Installing DotNetGallery

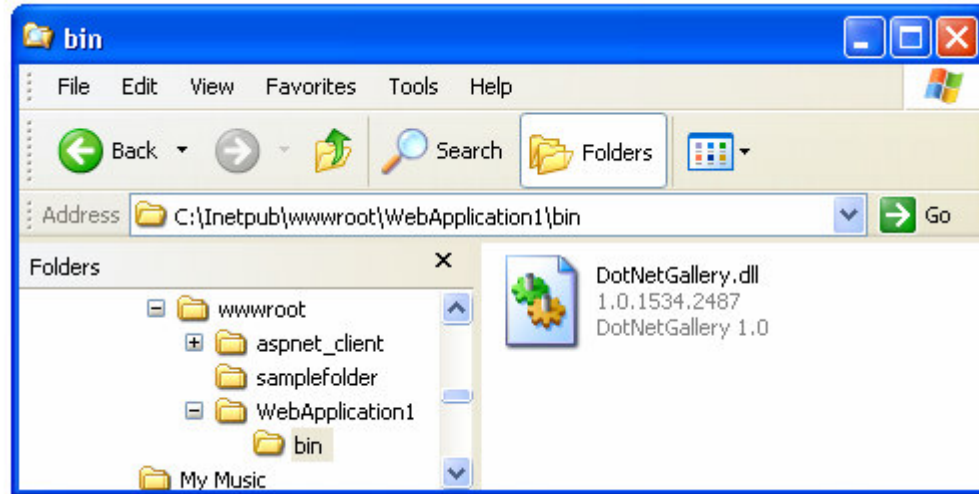
You will receive a Zip file which contains the following:

- DotNetGallery control(DotNetGallery.dll)
- Reference (.chm file)
- User manual (.pdf file)
- A set of samples, which demonstrate the main configurations of the DotNetGallery

### Step 1:

1. Unzip the package.
2. The DLL file needs to be placed in the project bin directory for the web application that uses the DLL.

For example, an application named WebApplication1 needs the file to be in **C:\inetpub\wwwroot\WebApplication1\bin** as in the screen shot below.

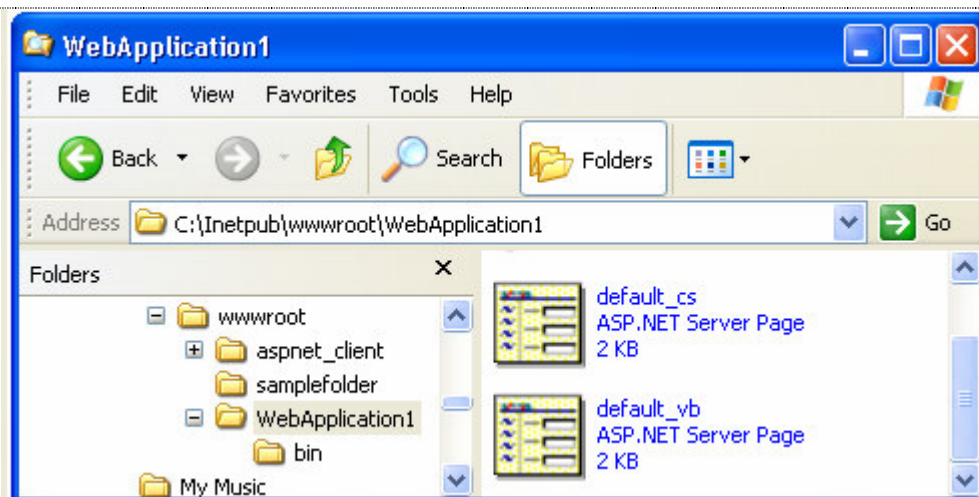
**Step 2:**

Open the example aspx files, make sure the FolderPath property points to the correct directory.

```
<CE:Gallery
  id="gallery1"
  runat="server"
  Height="500"
  Width="600"
  Column = "8"
  MaxImageWidth="1024"
  BackColor="#ffffff"
  CellPadding="5"
  AutoResizeUploadedImages = "true"
  CellSpacing="5"
  ForeColor="#000000"
  BorderColor="#cc0000"
  BorderStyle="solid"
  BorderWidth="0"
  CssClass="container"
  ShowThumbNailName="true"
  ShowThumbNailSize="false"
  ShowThumbNailDate="false"
  ShowThumbNailDescription="true"
  FolderPath = "/samplefolder"
></CE:Gallery>
```

**Step 3:**

If you want to launch the sample right away, place the **default\_cs.aspx** or **default\_vb.aspx** in your application folder.



**Step 4:****Install a DotNetGallery license**

DotNetGallery control requires a valid product license to run.

By default, DotNetGallery control will look for the license key file (DotNetGallery.lic) in the folder "bin" (~\bin\DotNetGallery.lic).

You can also install the license key file in any folder you want. Copy the license key file (DotNetGallery.lic) to that folder. Add an entry to your Web.config file, to tell DotNetGallery control where to find the license key file.

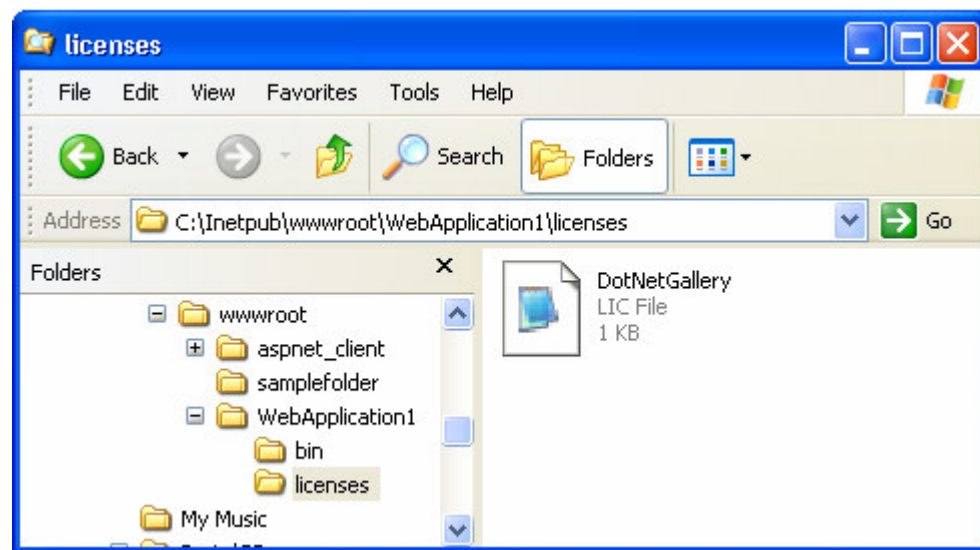
For example, you want to modify the license file location to c:\inetpub\Keys\ :

```
<configuration>
  <appSettings>
    <add key="DotNetGalleryLicense" value="/Keys/DotNetGallery.lic" />
  </appSettings>
</configuration>
```

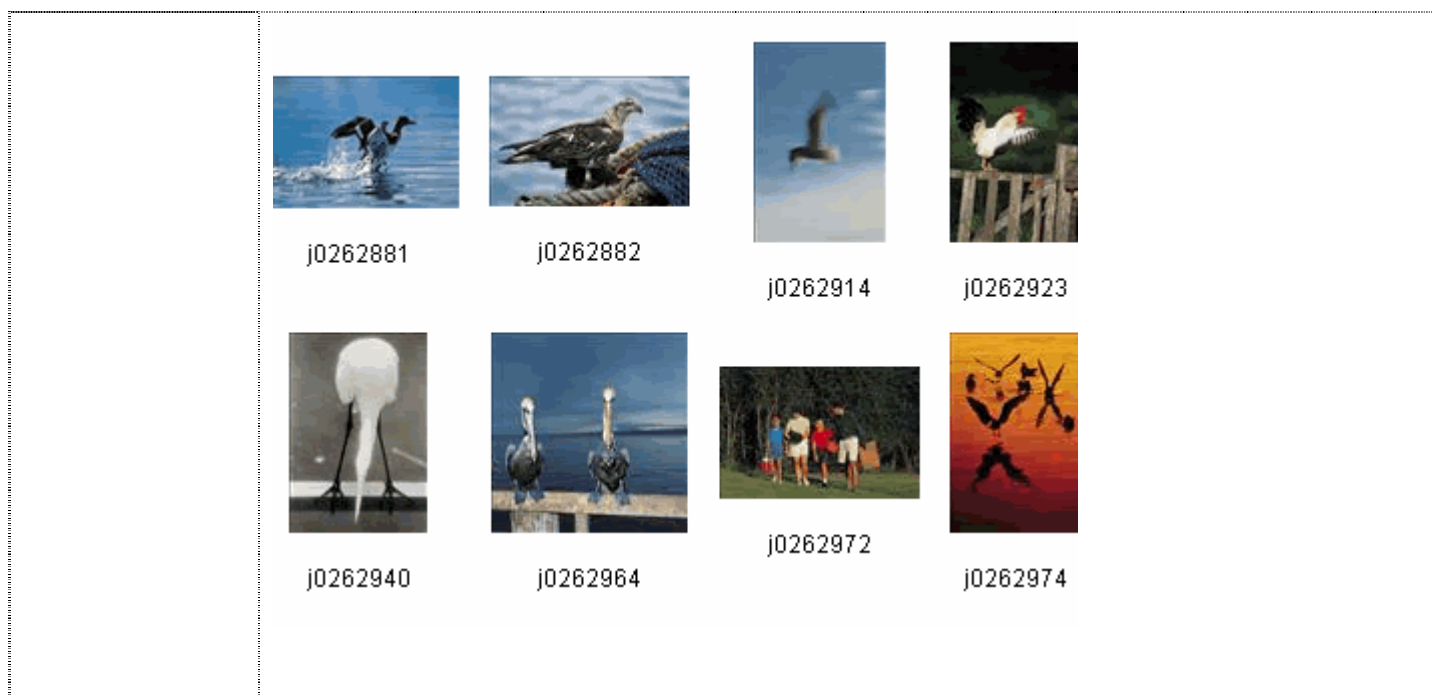
Do I need evaluation license key file?

Yes, you need a license key file to evaluate the software. Please follow up the instructions to set up the license key folder as well.

Upon purchasing a license, we will email you a new license file. You just need to replace the evaluate license file with the new license file.

**Step 5:**

Access the editor via [http://localhost/webapplication1/default\\_cs.aspx](http://localhost/webapplication1/default_cs.aspx).



## Implementation Errors

### Error message:

**Access to the path "C:\inetpub\wwwroot\WebApplication1\DotNetGallery\_Files" is denied.**

**Description:** An unhandled exception occurred during the execution of the current web request. Please review the stack trace for more information about the error and where it originated in the code.

**Exception Details:** System.UnauthorizedAccessException: Access to the path "C:\inetpub\wwwroot\WebApplication1\DotNetGallery\_Files" is denied.

ASP.NET is not authorized to access the requested resource. Consider granting access rights to the resource to the ASP.NET request identity. ASP.NET has a base process identity (typically {MACHINE}\ASPNET on IIS 5 or Network Service on IIS 6) that is used if the application is not impersonating. If the application is impersonating via <identity impersonate="true"/>, the identity will be the anonymous user (typically IUSR\_MACHINENAME) or the authenticated request user.

To grant ASP.NET write access to a file, right-click the file in Explorer, choose "Properties" and select the Security tab. Click "Add" to add the appropriate user or group. Highlight the ASP.NET account, and check the boxes for the desired access.

At run-time, when the first hit comes to the page, DotNetGallery control will check for the needed files, images, and as it won't be there, it will create the folder and extract files from assembly.

Finally, it is important to note that in order to save files on the server; the current user must have disk write permissions on the destination folder.

After you extract all the files from the assembly, you don't need to assign ASPNET account write permissions to your production server.

## Obtaining Support



CuteSoft is proud to provide free tech support to licensed users, as well as users currently evaluating our software. Visit our web site at <http://www.CuteSoft.net>, or send email to [support@CuteSoft.net](mailto:support@CuteSoft.net). Be sure to include your name and your company name when requesting support.